

art. 3074

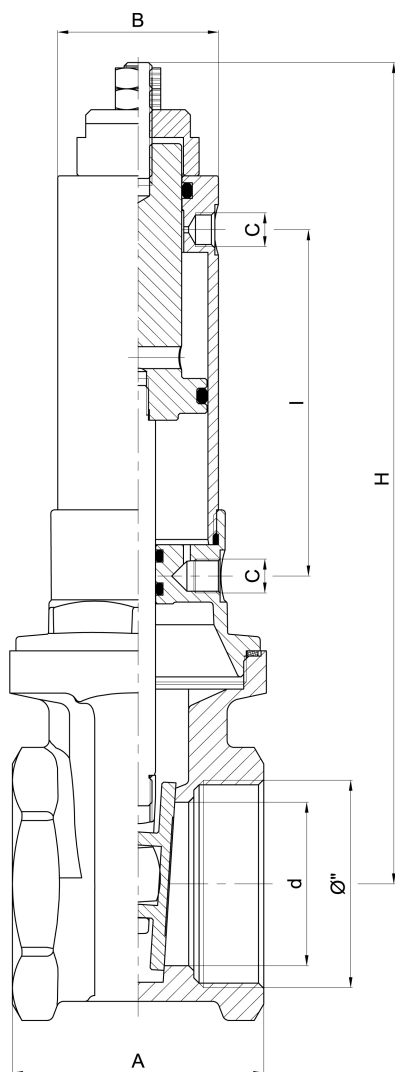
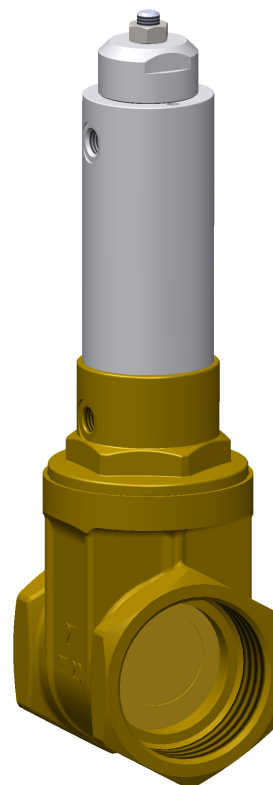
Saracinesca pneumatica

Double acting pneumatic gate valve

Vanne pneumatique à double effet

Doppelwirkender pneumatischer Schieber

Tajadera neumatica de doble efecto



Ø"	2"	3"	4"
A	72	85	97
B	46	60	60
C	1/8" G	1/8" G	1/8" G
d	47	70	94
I	99,5	130,5	130,5
H chiuso <i>closed</i>	233	304	343
H aperto <i>open</i>	269	366	431
Peso gr - <i>Weight gr</i>	2.010	4.020	6.900

Codici di ordinazione
Purchase article numbers

	2"	3"	4"
--	----	----	----

Saracinesca pneumatica a doppio effetto
Double acting pneumatic gate valve

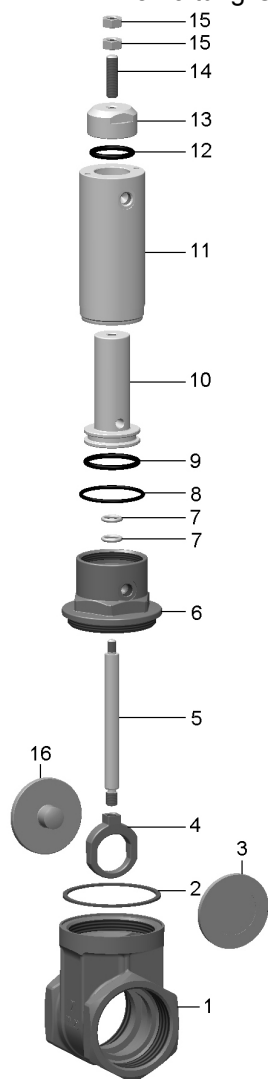
ARIN 3074 050 000

ARIN 3074 080 000

ARIN 3074 100 000

zootechnics-ecology / zootechnie-écologie

Tierhaltung-Ökologie / acessórios para cisterna



Condizioni di esercizio
Work conditions

DN	2" - 3" - 4"
P (bar)	20
P (PSI)	290
T °C	-15 +80

Condizioni di esercizio cilindro
Cylinder work conditions

DN	2" - 3" - 4"
P (bar)	6 ÷ 8
P (PSI)	90 ÷ 110
T °C	-15 +80

POS	CODICE / CODE	DENOMINAZIONE	DENOMINATION	MATERIALE	MATERIAL
1	SOIN 3074 050 001	CORPO 2"	BODY 2"	OTTONE UNI EN 12165	UNI EN 12165 BRASS
1	FOIN 3074 080 001	CORPO 3"	BODY 3"	OTTONE UNI EN 1982	UNI EN 1982 BRASS
1	FOIN 3074 100 001	CORPO 4"	BODY 4"	OTTONE UNI EN 1982	UNI EN 1982 BRASS
2	GGUA 3074 (DN) 004	GUARNIZIONE Ø"...	GASKET Ø"...	GUAMOTOR	GUAMOTOR
3	TOIN 3074 050 02B	DISCO FEMMINA 2"	FEMALE DISC 2"	OTTONE UNI EN 12164	UNI EN 12164 BRASS
3	SOIN 3074 080 02B	DISCO FEMMINA 3"	FEMALE DISC 3"	OTTONE UNI EN 12165	UNI EN 12165 BRASS
3	SOZO 0030 100 02B	DISCO FEMMINA 4"	FEMALE DISC 4"	OTTONE UNI EN 12165	UNI EN 12165 BRASS
4	SOIN 3074 050 006	TERMINALE ASTA	STEM TERMINAL	OTTONE UNI EN 12165	UNI EN 12165 BRASS
5	TAIN 3074 (DN) 003	ASTA Ø10 Ø"...	STEM Ø10 Ø"...	ACCIAIO INOX AISI 304	AISI 304 STAINLESS STEEL
6	SOIN 3074 (DN) 005	VITONE Ø"...	TOP SCREW Ø"...	OTTONE UNI EN 12165	UNI EN 12165 BRASS
7	ORVT 3074 050 015	OR 112 (Øi 9,92×2,62)	O RING 112 (Øi 9,92×2,62)	FKM	FKM
8	..OR 3074 050 008	OR 3162 (Øi 40,95×2,62) 2"	O RING 3162 (Øi 40,95×2,62) 2"	GOMMA NBR	NBR RUBBER
8	..OR 1012 015 005	OR 3200 (Øi 50,47×2,62) 3"-4"	O RING 3200 (Øi 50,47×2,62) 3"-4"	GOMMA NBR	NBR RUBBER
9	..OR 3074 050 010	OR 4131 (Øi 32,93×3,53) 2"	O RING 4131 (Øi 32,93×3,53) 2"	GOMMA NBR	NBR RUBBER
9	..OR 3074 080 010	OR 4162 (Øi 40,86×3,53) 3"-4"	O RING 4162 (Øi 40,86×3,53) 3"-4"	GOMMA NBR	NBR RUBBER
10	CILI 3074 (DN) 009	ALBERO Ø"...	SHAFT Ø"...	ALLUMINIO	ALUMINUM
11	CILI 3074 050 011	CILINDRO 2"	CYLINDER 2"	ALLUMINIO	ALUMINUM
11	CILI 3074 080 011	CILINDRO 3"-4"	CYLINDER 3"-4"	ALLUMINIO	ALUMINUM
12	..OR 3074 050 012	OR 4100 (Øi 24,99×3,53) 2"	O RING 4100 (Øi 24,99×3,53) 2"	GOMMA NBR	NBR RUBBER
12	..OR 3074 080 012	OR 4137 (Øi 34,52×3,53) 3"-4"	O RING 4137 (Øi 34,52×3,53) 3"-4"	GOMMA NBR	NBR RUBBER
13	CILI 3074 050 013	TAPPO 2"	COVER 2"	ALLUMINIO	ALUMINUM
13	CILI 3074 080 013	TAPPO 3"-4"	COVER 3"-4"	ALLUMINIO	ALUMINUM
14	TAIN 3074 050 016	PERNO FILETTATO M10	THREADED PIN M10	ACCIAIO INOX AISI 304	AISI 304 STAINLESS STEEL
15	DAAC 0090 150 015	DADO M10	NUT M10	ACCIAIO INOX AISI 304	AISI 304 STAINLESS STEEL
16	TOIN 3074 050 02A	DISCO MASCHIO 2"	MALE DISC 2"	OTTONE UNI EN 12164	UNI EN 12164 BRASS
16	SOIN 3074 080 02A	DISCO MASCHIO 3"	MALE DISC 3"	OTTONE UNI EN 12165	UNI EN 12165 BRASS
16	SOZO 0030 100 02A	DISCO MASCHIO 4"	MALE DISC 4"	OTTONE UNI EN 12165	UNI EN 12165 BRASS