



Battioni®
Pagani

Setting the pace since 1953

SWIVEL CAST IRON PIPE WITH FLANGE Ø 3" - 4"

GETTO GIREVOLE FLANGIATO
REGNER MIT FLANSCH

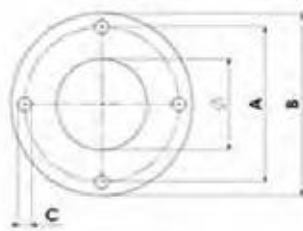
HYDRAULIC SWIVEL



MANUAL SWIVEL



	NOZZLE DIAMETER (mm)	PRESSURE (bar)	CAPACITY (l/min)	JET LENGTH 30° (m)	JET LENGTH 45° (m)
SWIVEL 3"	25-34	5	1600	56	65
SWIVEL 3"	25-34	6	1750	59	69
SWIVEL 3"	25-34	7	1900	62	72
SWIVEL 3"	25-34	8	2020	65	75
SWIVEL 4"	34	5	1800	58	67
SWIVEL 4"	34	6	1960	61	71
SWIVEL 4"	34	7	2100	64	74
SWIVEL 4"	34	8	2260	67	77



CODE	Ø	A	B	C	D	N. HOLES	N. TEETH	Kg	Article
5010401006	200	320	350	15	10	6	75	4,8	2008/1



RANGE OIL TEMPERATURE -30° c +60° C
MAX WORKING PRESSURE HYDRAULIC MOTOR 165 bar (2475 psi)
PRESSURE APPLICATION 80 bar
MAX OIL CAPACITY 60 l/min.

TEMPERATURA AMMISSIBILE DELL'OLIO -30° c +60° C
 PRESSIONE MAX MOTORE IDRAULICO 165 bar CONTINUA (2475 psi)
 PRESSIONE APPLICAZIONE 80 bar
 PORTATA MAX OLIO 60 l/min. CONTINUA

CODE	Model	Hydraulic Swivel Joint RPM	Kg	Article
5020400011	HYDRAULIC SWIVEL	7	5.9	2601

ULÄSSIGE ÖLTEMPERATUR -30° c +60° C
 MAX DRUCK DES HYDRAULIKES MOTORS 165 bar DAUERND (2475 psi)
 ANWENDUNG DRUCK 80 bar
 MAX DURCHFLUSSMENGE ÖL 60 l/min. DAUERND